

# Cement Mill Plant Packages

## Major Equipment Summary

The proposed cement plants with the daily production capacity of 3,000 to 10,000 tons comprise the following major equipment:

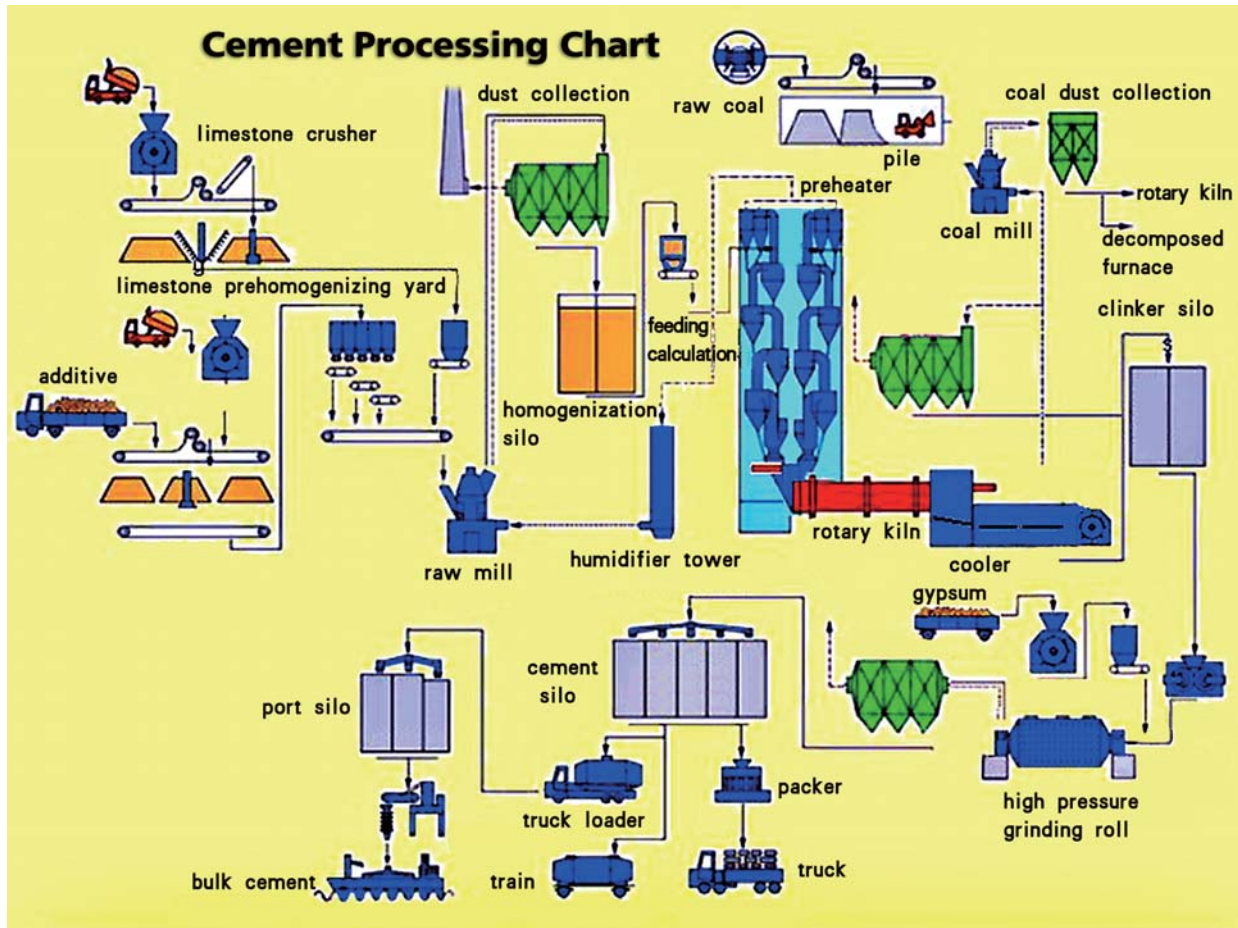
Limestone crusher
Additive mixer
Homogenization silo
Raw ingredient mill
Humidifier tower
Preheater
Rotary kiln
Cooler
Clinker silo
High pressure grinding roll
Packers and loaders
Optional auxiliary equipment and infrastructure
Optional fired-coal handling devices and subsystems

### Note:

- (1) The above data represent the maximum values of the specification of the machine.
- (2) The vendor reserves the right to make changes to the specifications in order to improve the products.



# Cement Mill Plant Packages



This information sheet describes the packaged equipment for a cement mill plant with the daily output capacity of 3,000 to 10,000 tons, or roughly one to three million tons per annum. Essentially, the package consists of the main components of cement mill equipment; plus some auxiliary devices associated with these main operating components.

Brighton Equipment Corporation ("Brighton"), as an engineering company, provides first-class services in all aspects in the cement manufacturing industry; namely, facility design, plant construction, equipment installation, operation commission and after sales services.

Presently, Brighton's Engineering Services Group (ESG) is able of offering cement mills with the Kiln External Deformation Cement Technology with annual production capacity ranging from 1.5 million tons (or daily production rate of 5,000 tons), 2.5 million tons (or daily production rate of 8,000 tons), 3 million tons (or daily production rate of 10,000 tons). Moreover, ESG is also capable of offering cement mills with Rotating Kiln Cement Mill Technology with annual production capacity ranging from 0.25 to 10 million tons. The sizes of the cement kilns are ranging from the smallest one of 1.2 meter in diameter to the largest one of 6.1 meters in diameter.